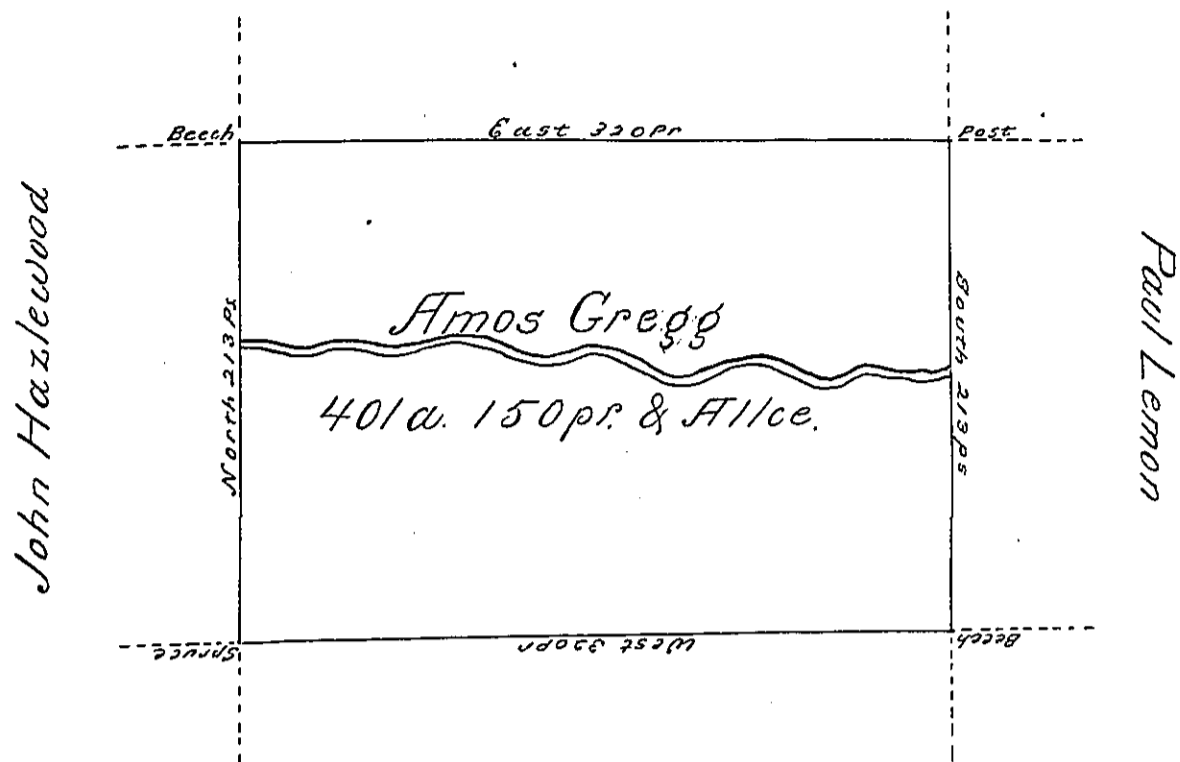


Elisha Green



John Grimes

Situate on the west side of French Creek  
 in Allegheny County containing 401 acres and  
 150 pr and allowance of Six percent for Roads &c.  
 Surveyed the 8th. day of Octr. 1794 In pursuance  
 of a warrant bearing date the 30th. day of May  
 1792

Wm. Power Dy Sr.

To Daniel Brodhead Esqr.  
 Surveyor General

IN TESTIMONY that the above is a copy of the original remaining on file in  
 the Department of Internal Affairs of Pennsylvania, made  
 conformably to an Act of Assembly approved the 16th day of  
 February, 1833, I have hereunto set my Hand and caused  
 the Seal of said Department to be affixed at Harrisburg,  
 this third day of October 1899

*James W. Latta*  
 Secretary of Internal Affairs.

